

Biodiversity and Health



Community based projects

What can we learn from others?

- Africa
- Asia
- South America

What have we forgotten?

- UK

Famine Foods

African Wild Harvest

Which species can be used ?

Which species are being lost ?

Key = Nutrients



Some of the biodiversity for food maintained by TATRO Women's Group in Western Kenya



Members of BIDII Women's Group with some of their traditional food plants

Africulture Centre

- Sustainable source of medicinal plants
- Plants for cultural uses
- Fodder – building material – fuel













Knautia
C. P. P. P. P.



also enter food, fodder, legumes, fruit, vegetables to be consumed
obvious treatment in burning sites / increased forest biomass, many of which can also be harvested for food, fodder and medicine

Acacia harpax (central 'mandala' tree)
Podocarpus falcatus (prebushwood)
Warburgia salutaris (river 'thorn')
Olea europaea africana (African Olive)

Albino *albino* (Latin)
Artemisia *afra* (African Whimsical)
Carpotrochus *edulis* (Chad)
Cassia *alvina* (Alvina)
Curtis *single* (Alvina)
Dendroica *angustirostris* (Alvina)
Eubryonia *frutescens* (Alvina)
Hydrocotyle *hemisphaerica* (Alvina)

Trichostema sp. *Quadrifidum*
Trichostema repens *Silene acaulis*
Trichostema pratense (Sud. *caerulea*)
Asplenium adnigrum (Fruticosa) *L. lucida*

Sinapis officinale (Cruciferae) Cere
Achillea millefolium (Asteraceae)
Tanacetum sp. (Asteraceae)
Trifolium pratense (Fabaceae)
Chamaemelum nobile (Asteraceae)
Borago officinalis (Boraginaceae)

Asplenium adnigrum (Lamour.)
Smilacina officinalis (Lamour.)
Urtica dioica (Lamour.)
Levisticum officinale (Lamour.)

Spores in:
Oxide in: STIRRED
Creeping (march)
Puffing in: GRANULITE, Puffing Thicket
Aerial pocket (marching)
Insects / Insects
Insects in: (march) (march)

Tagetes sp. (African Marigold)
 Ocimum basilicum (Basil)
 Hieracium officinale (Dandelion)
 Tropaeolum sp. (Nasturtium)
 Nephthia purpureum (Petitfleur)
 Ruscus aculeatus (Butcher's Broom)
 Rosa rugosa (Rugosa Rose)

Thymus officinalis (Spottwort)
Nyctaginia officinalis (Lammstirn)
Levisticum officinale (Lewigen)
Ajuga reptans (Gärbü)
Ajuga reptans (Gärbü)
Chamaejasme officinalis (Schwamm)
Chamaejasme officinalis (Schwamm)

Lyrio didee
Lyrio quadrate
Chondropetalum secterium
Chondropetalum multiseriatum
Aloe sp.
Yucca sp.
Burchardia sp.
Centrostichus sp.



show garden application, Chelsea flower show 2006

designed by alan capper, kent design ltd
on behalf of gardenaid

1999, 2000, 2001, 2002, 2003, 2004, 2005, 2006, 2007, 2008, 2009, 2010, 2011, 2012, 2013, 2014, 2015, 2016, 2017, 2018, 2019, 2020, 2021, 2022, 2023, 2024, 2025, 2026, 2027, 2028, 2029, 2030, 2031, 2032, 2033, 2034, 2035, 2036, 2037, 2038, 2039, 2040, 2041, 2042, 2043, 2044, 2045, 2046, 2047, 2048, 2049, 2050, 2051, 2052, 2053, 2054, 2055, 2056, 2057, 2058, 2059, 2060, 2061, 2062, 2063, 2064, 2065, 2066, 2067, 2068, 2069, 2070, 2071, 2072, 2073, 2074, 2075, 2076, 2077, 2078, 2079, 2080, 2081, 2082, 2083, 2084, 2085, 2086, 2087, 2088, 2089, 2090, 2091, 2092, 2093, 2094, 2095, 2096, 2097, 2098, 2099, 2100, 2101, 2102, 2103, 2104, 2105, 2106, 2107, 2108, 2109, 2110, 2111, 2112, 2113, 2114, 2115, 2116, 2117, 2118, 2119, 2120, 2121, 2122, 2123, 2124, 2125, 2126, 2127, 2128, 2129, 2130, 2131, 2132, 2133, 2134, 2135, 2136, 2137, 2138, 2139, 2140, 2141, 2142, 2143, 2144, 2145, 2146, 2147, 2148, 2149, 2150, 2151, 2152, 2153, 2154, 2155, 2156, 2157, 2158, 2159, 2160, 2161, 2162, 2163, 2164, 2165, 2166, 2167, 2168, 2169, 2170, 2171, 2172, 2173, 2174, 2175, 2176, 2177, 2178, 2179, 2180, 2181, 2182, 2183, 2184, 2185, 2186, 2187, 2188, 2189, 2190, 2191, 2192, 2193, 2194, 2195, 2196, 2197, 2198, 2199, 2200, 2201, 2202, 2203, 2204, 2205, 2206, 2207, 2208, 2209, 2210, 2211, 2212, 2213, 2214, 2215, 2216, 2217, 2218, 2219, 2220, 2221, 2222, 2223, 2224, 2225, 2226, 2227, 2228, 2229, 2230, 2231, 2232, 2233, 2234, 2235, 2236, 2237, 2238, 2239, 2240, 2241, 2242, 2243, 2244, 2245, 2246, 2247, 2248, 2249, 2250, 2251, 2252, 2253, 2254, 2255, 2256, 2257, 2258, 2259, 2260, 2261, 2262, 2263, 2264, 2265, 2266, 2267, 2268, 2269, 2270, 2271, 2272, 2273, 2274, 2275, 2276, 2277, 2278, 2279, 2280, 2281, 2282, 2283, 2284, 2285, 2286, 2287, 2288, 2289, 2290, 2291, 2292, 2293, 2294, 2295, 2296, 2297, 2298, 2299, 2300, 2301, 2302, 2303, 2304, 2305, 2306, 2307, 2308, 2309, 2310, 2311, 2312, 2313, 2314, 2315, 2316, 2317, 2318, 2319, 2320, 2321, 2322, 2323, 2324, 2325, 2326, 2327, 2328, 2329, 2330, 2331, 2332, 2333, 2334, 2335, 2336, 2337, 2338, 2339, 2340, 2341, 2342, 2343, 2344, 2345, 2346, 2347, 2348, 2349, 2350, 2351, 2352, 2353, 2354, 2355, 2356, 2357, 2358, 2359, 2360, 2361, 2362, 2363, 2364, 2365, 2366, 2367, 2368, 2369, 2370, 2371, 2372, 2373, 2374, 2375, 2376, 2377, 2378, 2379, 2380, 2381, 2382, 2383, 2384, 2385, 2386, 2387, 2388, 2389, 2390, 2391, 2392, 2393, 2394, 2395, 2396, 2397, 2398, 2399, 2400, 2401, 2402, 2403, 2404, 2405, 2406, 2407, 2408, 2409, 2410, 2411, 2412, 2413, 2414, 2415, 2416, 2417, 2418, 2419, 2420, 2421, 2422, 2423, 2424, 2425, 2426, 2427, 2428, 2429, 2430, 2431, 2432, 2433, 2434, 2435, 2436, 2437, 2438, 2439, 2440, 2441, 2442, 2443, 2444, 2445, 2446, 2447, 2448, 2449, 2450, 2451, 2452, 2453, 2454, 2455, 2456, 2457, 2458, 2459, 2460, 2461, 2462, 2463, 2464, 2465, 2466, 2467, 2468, 2469, 2470, 2471, 2472, 2473, 2474, 2475, 2476, 2477, 2478, 2479, 2480, 2481, 2482, 2483, 2484, 2485, 2486, 2487, 2488, 2489, 2490, 2491, 2492, 2493, 2494, 2495, 2496, 2497, 2498, 2499, 2500, 2501, 2502, 2503, 2504, 2505, 2506, 2507, 2508, 2509, 2510, 2511, 2512, 2513, 2514, 2515, 2516, 2517, 2518, 2519, 2520, 2521, 2522, 2523, 2524, 2525, 2526, 2527, 2528, 2529, 2530, 2531, 2532, 2533, 2534, 2535, 2536, 2537, 2538, 2539, 2540, 2541, 2542, 2543, 2544, 2545, 2546, 2547, 2548, 2549, 2550, 2551, 2552, 2553, 2554, 2555, 2556, 2557, 2558, 2559, 2560, 2561, 2562, 2563, 2564, 2565, 2566, 2567, 2568, 2569, 2570, 2571, 2572, 2573, 2574, 2575, 2576, 2577, 2578, 2579, 2580, 2581, 2582, 2583, 2584, 2585, 2586, 2587, 2588, 2589, 2590, 2591, 2592, 2593, 2594, 2595, 2596, 2597, 2598, 2599, 2600, 2601, 2602, 2603, 2604, 2605, 2606, 2607, 2608, 2609, 2610, 2611, 2612, 2613, 2614, 2615, 2616, 2617, 2618, 2619, 2620, 2621, 2622, 2623, 2624, 2625, 2626, 2627, 2628, 2629, 2630, 2631, 2632, 2633, 2634, 2635, 2636, 2637, 2638, 2639, 2640, 2641, 2642, 2643, 2644, 2645, 2646, 2647, 2648, 2649, 2650, 2651, 2652, 2653, 2654, 2655, 2656, 2657, 2658, 2659, 2660, 2661, 2662, 2663, 2664, 2665, 2666, 2667, 2668, 2669, 2670, 2671, 2672, 2673, 2674, 2675, 2676, 2677, 2678, 2679, 2680, 26





Plant diversity

- Kenya = >5,000 species
- South Africa = > 25,000 species
- UK = 1,600 species

Ethnomedica

**“remembered
remedies”**

www.kew.org/ethnomedica

Ethnomedica

Royal Botanic Gardens, Kew

Eden Project

Natural History Museum

Chelsea Physic Gardens

Herbalists

Ethnobotanists

Collecting information about traditional medicinal uses of plants in England

1900-1945





Most cited species

- *Rumex* – dock
- *Allium cepa* – onion
- *Urtica dioica* – nettle
- *Tanacetum parthenium* – Feverfew
- *Allium sativum* – garlic
- *Sambucus nigra* – elder
- *Symphytum* – comfrey
- *Lavandula* – lavender
- *Brassica oleracea* – cabbage
- *Taraxacum* – dandelion



Rosehips



**Trade in UK
species**

Elder

Meadowsweet



Community based projects

- Which plants do they eat?
- What else eats the plants?
- Cultural value of plants
- How do you grow the plants?
- Where do the plants come from?
- Food miles / energy miles /carbon use
- Plants in local market - supermarket
- Other uses of plants – biofuels, dyes, pesticides

Plant Cultures

Exploring plants & people

 View my scrapbook | Search:

Go

Home

Plants

Themes

Stories

Pictures

Activities

Schools



Welcome

Enjoy browsing and searching our unique collection of pictures, stories and information about plants from South Asia. Find out why they are so important to our lives and their varied and.

Choose a plant...



Go

Pictures



[Browse our collection of pictures](#) spanning 400 years featuring plants in ways you will recognise and some you might not...

Stories

[Read other people's stories](#) about different plants and add your own story too.

"...and my secret to growing ginger is..."

News

'Asia: Body, Mind, Spirit'
A major exhibition presented by the Wellcome Trust and Asia house.

For more details visit the

[Body, Mind, Spirit webpage](#).

Kew

PLANTS PEOPLE
POSSIBILITIES

cultureonline

Department for Culture, Media and Sport



[About](#) : [Partners](#) : [Contact us](#) : [Feedback](#)

[Help](#) : [Accessibility](#) : [Copyright](#) : [Privacy](#)

Picture gallery

Explore our collection of pictures from our partners spanning 400 years showing a wide range of historical and contemporary plant images. Choose from our browse buttons or enter a word or phrase in the search box.

 [Help with searching](#)

Browse by:

Common name:



OR by Theme:

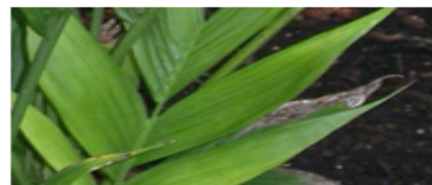


OR by partner:



OR

Search for:



Our picture partners:

[The British Library](#)

[Royal Botanic Gardens, Kew](#)

[The Natural History museum](#)

[The Victoria and Albert museum](#)

[Bradford City Council](#)

[Learn more about how you can use these images](#)





