



The Development of Tree-lined Streets and Avenues

1860-1930

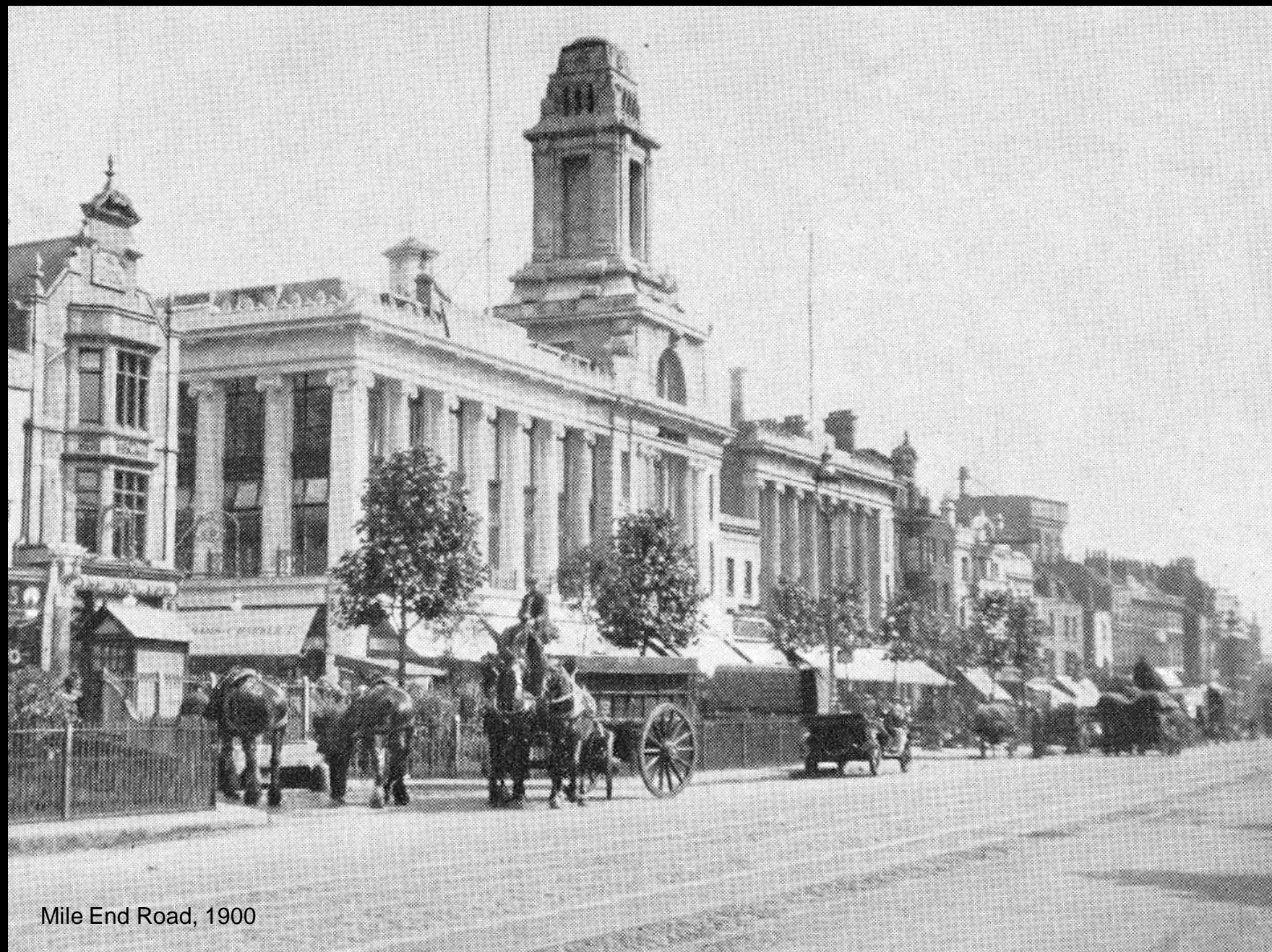
Hazel Conway







c.1900



Mile End Road, 1900



1868

CHICAGO

From the Lake Michigan side, looking south.

IN 1868.



Lake Shore Drive, 1900



Lake Shore Drive, 2010



1874



1895



LONDON. Cleopatra's Needle. No. 1035.

1914



Broad Street, Birmingham.

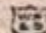
1900



Western plane



*Great Western Road, Glasgow.*

RELIABLE  SERIES.

1900



GREAT WESTERN ROAD & ENTRANCE TO BOTANICAL GARDENS, GLASGOW. A. 0222.

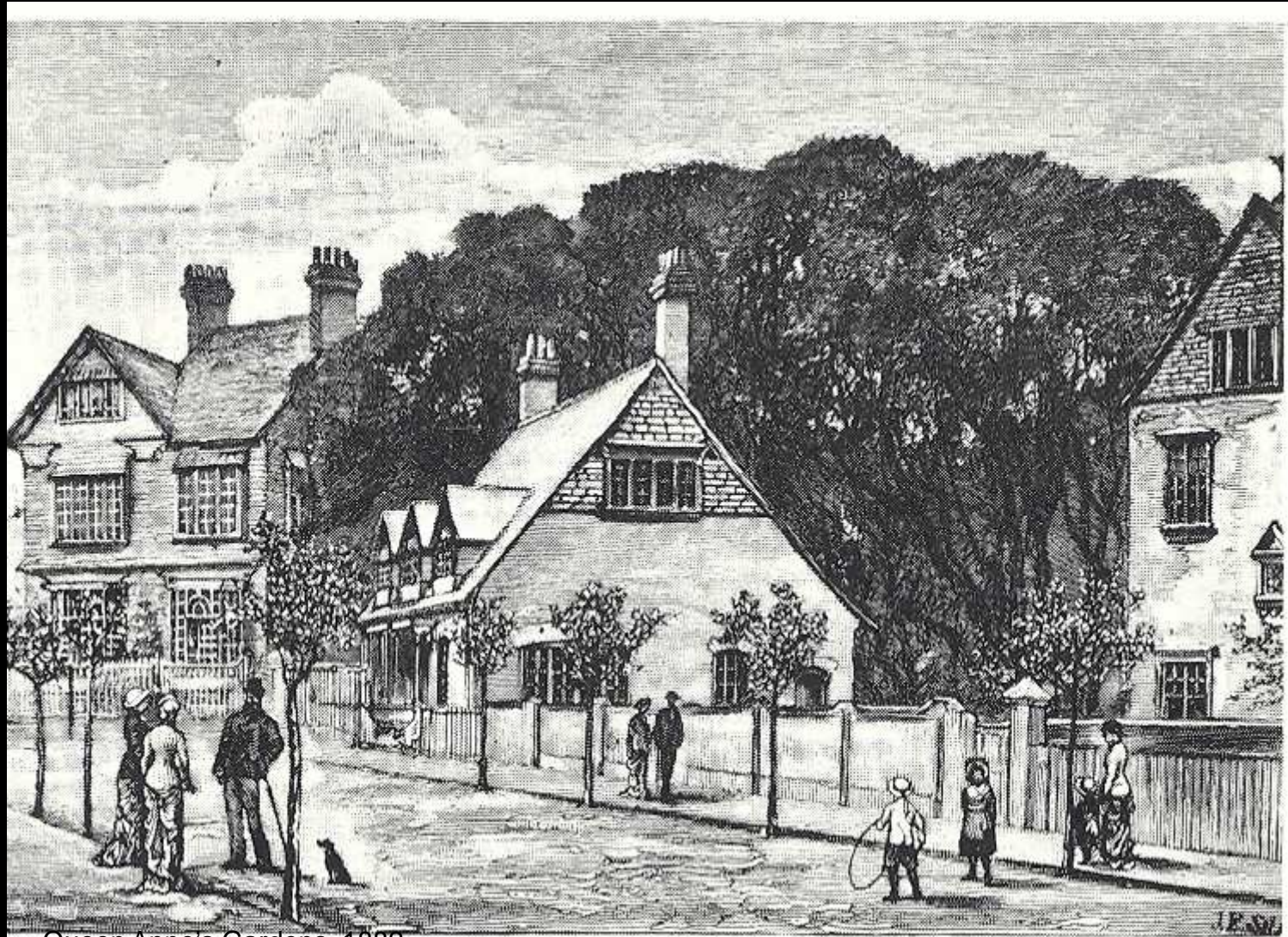




Gower Street



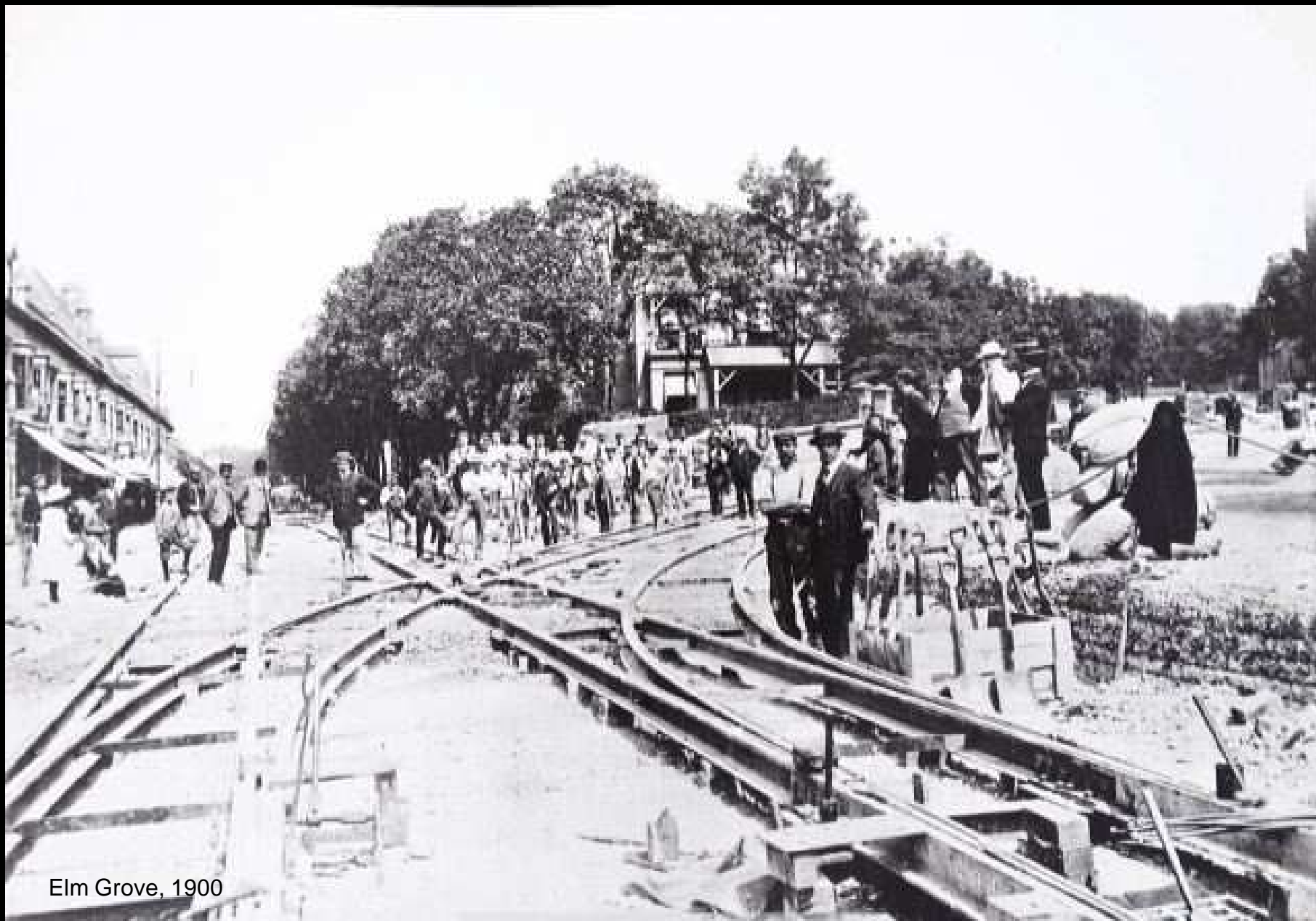
Clonmel Road, Fulham



Queen Anne's Gardens, 1882



Bath Road, Camille Pissarro



Elm Grove, 1900



Elm Grove, 1998



Letchworth c. 1930



*The Garden City: Leitchworth, a panorama taken in 1912. The town was begun in 1903 with low densities, a rational organisation*



Storks Road, photo 1935

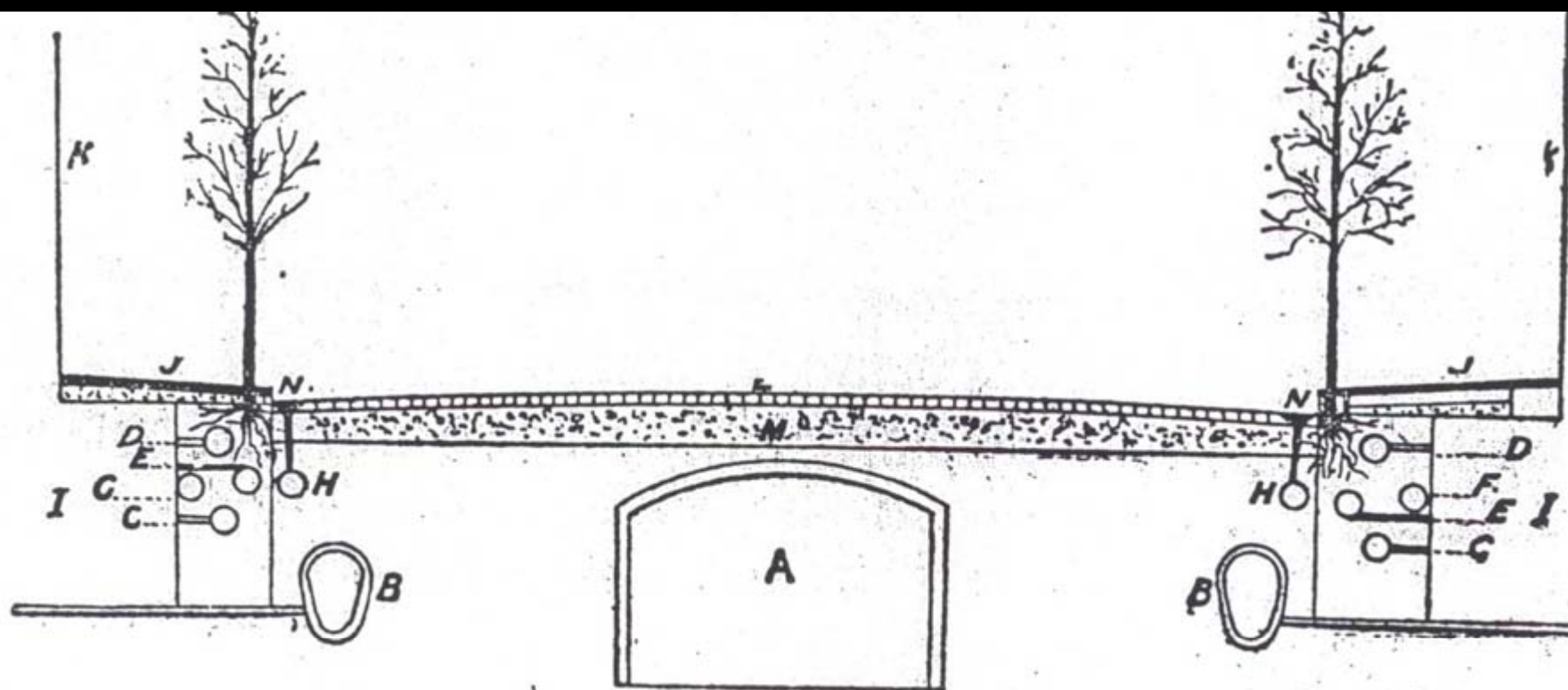


FIG. 52.—HINDRANCES TO STREET TREES.

(A section of Kingsway, London.)

A	Subway for trams.	H H	Surface water drains.
B B	Sewers.	I I	Cellars.
C C	Gas mains.	J J	Asphalt path.
D D	Water mains.	K K	Buildings.
E E	Electric cables.	L	Wood paving.
F	Telephone conduit.	M	Concrete.
G	Telegraph conduit.	N N	Gulleys.



2010



c. 1930

BRENTFORD, GREAT WEST ROAD

69540



2006



A photograph of a large, mature tree with dense green foliage, likely a plane tree, standing in a city street. In the background, a multi-story brick building with many windows is visible. The scene is captured from a low angle, looking up at the tree's canopy.

### Child's Song in Spring

The chesnut's proud and the lilac's pretty,  
The poplar's gentle and tall,  
But the plane tree's kind to the poor dull city -  
I love him best of all.

E. Nesbit